



**SOMEVA**  
RENEWABLES

# POTTINGER ENERGY PARK FACT SHEET

The proposed Pottinger Energy Park project is located approximately 60km south of Hay and 75km north of Deniliquin in NSW's historic Western Riverina region. The project is located within NSW's South West Renewable Energy Zone.

Pottinger Energy Park is being developed by Someva and AGL and has been named after the Pottinger family – one of the first families to install and maintain windmills in the region. This adoption of wind power in the early 1900s helped to develop a thriving local agriculture industry

and the Pottinger Energy Park seeks to build on that legacy to create a prosperous future for the region. Once completed, the Pottinger Energy Park will generate up to 1,300MW of clean, affordable and reliable energy – enough to power up to 830,000 Australian homes.

Someva's community co-design process means the Pottinger Energy Park project will operate alongside existing agricultural practices, with up to 247 wind turbines supported by an advanced battery storage facility.

## BENEFITS

### 01 Community Co-design

We are deeply committed to implementing a tailored community co-design process that ensures communities share in and benefit from our renewable energy projects.

### 02 Community Benefits

We work closely with local communities, local councils and First Nations people to create local Community Benefits Funds that are tailored to the region.

### 03 Neighbour Benefits

We take the time to get to know landowners in the communities where we operate. We pride ourselves on developing long-lasting relationships that we know will last decades and once construction starts on the project we will make payments to a Neighbour Benefits Program.

### 04 Supporting Local Jobs

The Pottinger Energy Park plans to create 900 jobs through construction with an additional 50 jobs during operations.



UP TO 247  
TURBINES



POWERING UP TO  
830,000 HOMES



1,300 MEGAWATTS  
OF CLEAN ENERGY



PROVIDING  
\$1.3 MILLION IN  
COMMUNITY BENEFITS



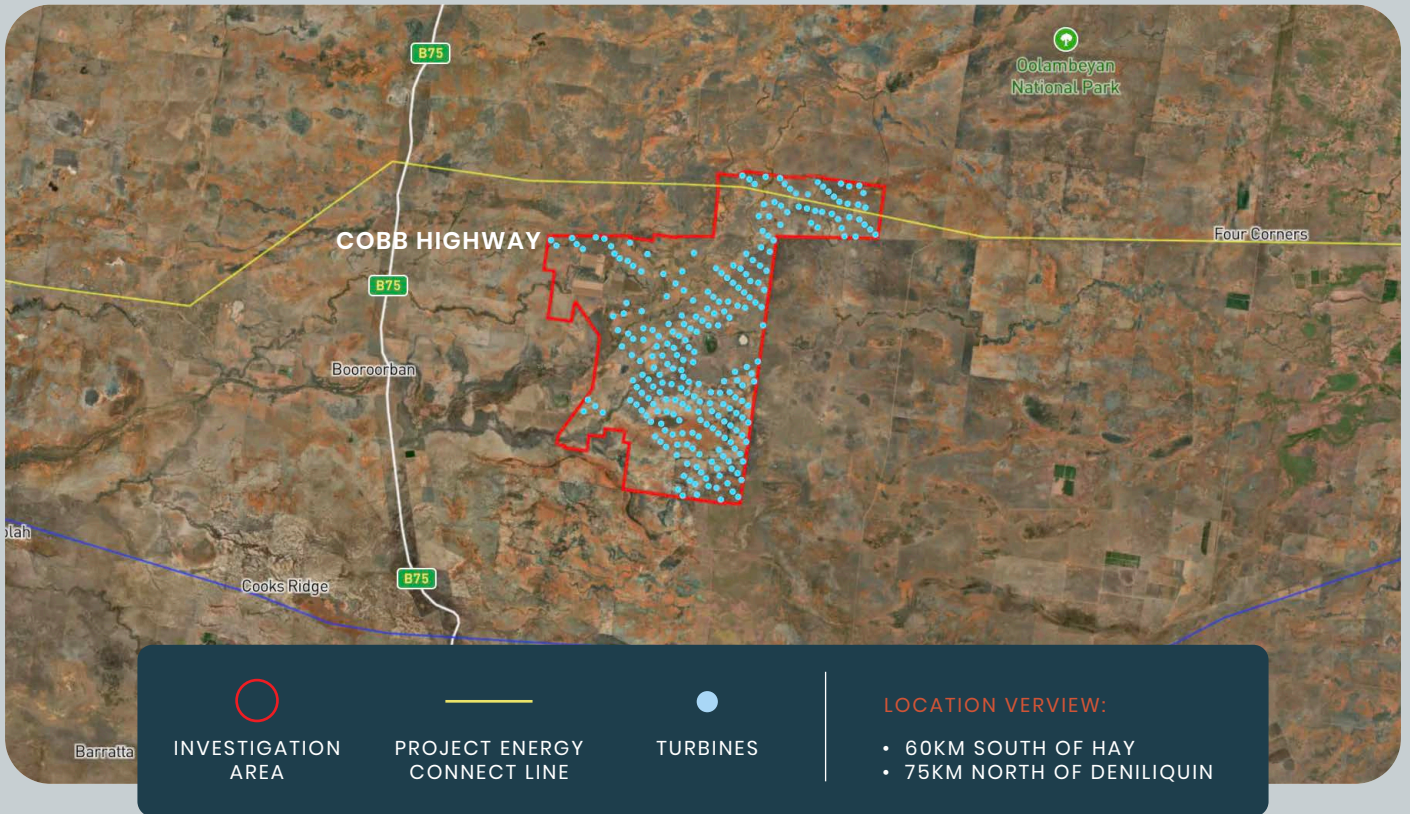
BATTERY  
POWER 500MW/  
2000MWH

## OUR STATEMENT

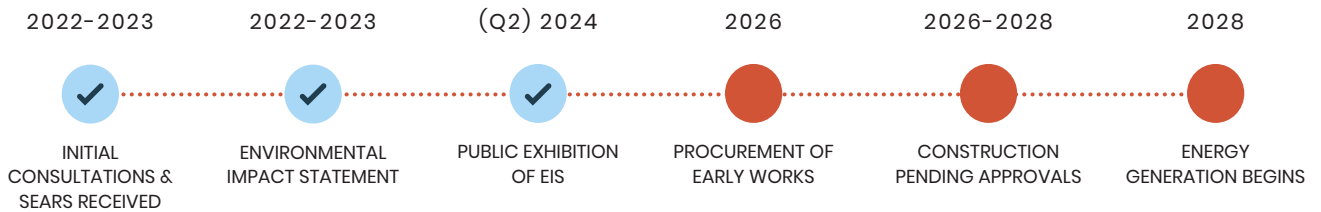
“Our process means we spend time listening to, and working with regional communities to ensure our projects deliver tailored economic, social, and environmental benefits.”

TIM MEAD, DEVELOPMENT DIRECTOR

## MAP OF POTTINGER ENERGY PARK INVESTIGATION AREA



## ESTIMATED PROJECT TIMELINE



Get in touch with us if you'd like to learn more about the opportunity.

Please contact our team at [community@someva.com.au](mailto:community@someva.com.au) for further information or visit our website.



**SOMEVA**  
RENEWABLES

[SOMEVARENEWABLES.COM.AU/POTTINGER](https://SOMEVARENEWABLES.COM.AU/POTTINGER)