

SUNNY CORNER WIND FARM FACT SHEET

The proposed Sunny Corner Wind Farm would be located in the softwood plantation at Sunny Corner State Forest, on the lands of the Wiradjuri people, halfway between Bathurst and Lithgow in NSW. This region has been historically rich in energy, and this proposed project will continue to provide the power needs of NSW residents while supporting local industry around Bathurst and Lithgow

Mainstream Renewable Power and Someva Renewables have been awarded a permit by the Forestry Corporation of NSW to investigate a wind farm with a potential capacity of 500 megawatts.

When fully operational, it could power 300,000 homes with affordable, clean and reliable energy for approximately 30 years.

Mainstream and Someva propose to investigate Sunny Corner Wind Farm to operate in harmony with recreational and traditional forestry activities.

The first stage will be extensive community consultation with communities, First Nations people, forest users, councils and businesses. This feedback will be used to shape community benefit commitments.

BENEFITS

01 Community Co-design

We are committed to meeting with members of the local communities and understanding local issues so that we can tailor our community funding solutions to your communities.

02 Community Benefits

We will work closely with local community members, councils and First Nations people to create annual Community Benefit Funds that are tailored to the local region.

03 Neighbour Benefits

We will work closely with neighbours on the design of the project and in developing Neighbour Agreements that provide benefits to near neighbours. We will discuss:

- Changing design elements that may include relocating proposed wind turbines;
- Screening and vegetation options;
- Annual payments to near neighbours.

04 Supporting Local Jobs

The proposed wind farm would create jobs through construction and operations. We would like to hear from local businesses who supply fencing, road grading, earthworks, concreting, civil engineering, mechanical technicians, logistics, catering and accommodation services.



ESTIMATED
500 MW OF
WIND POWER



POWERING UP TO
300,000 HOMES



PROVIDING
BENEFITS TO THE
COMMUNITY

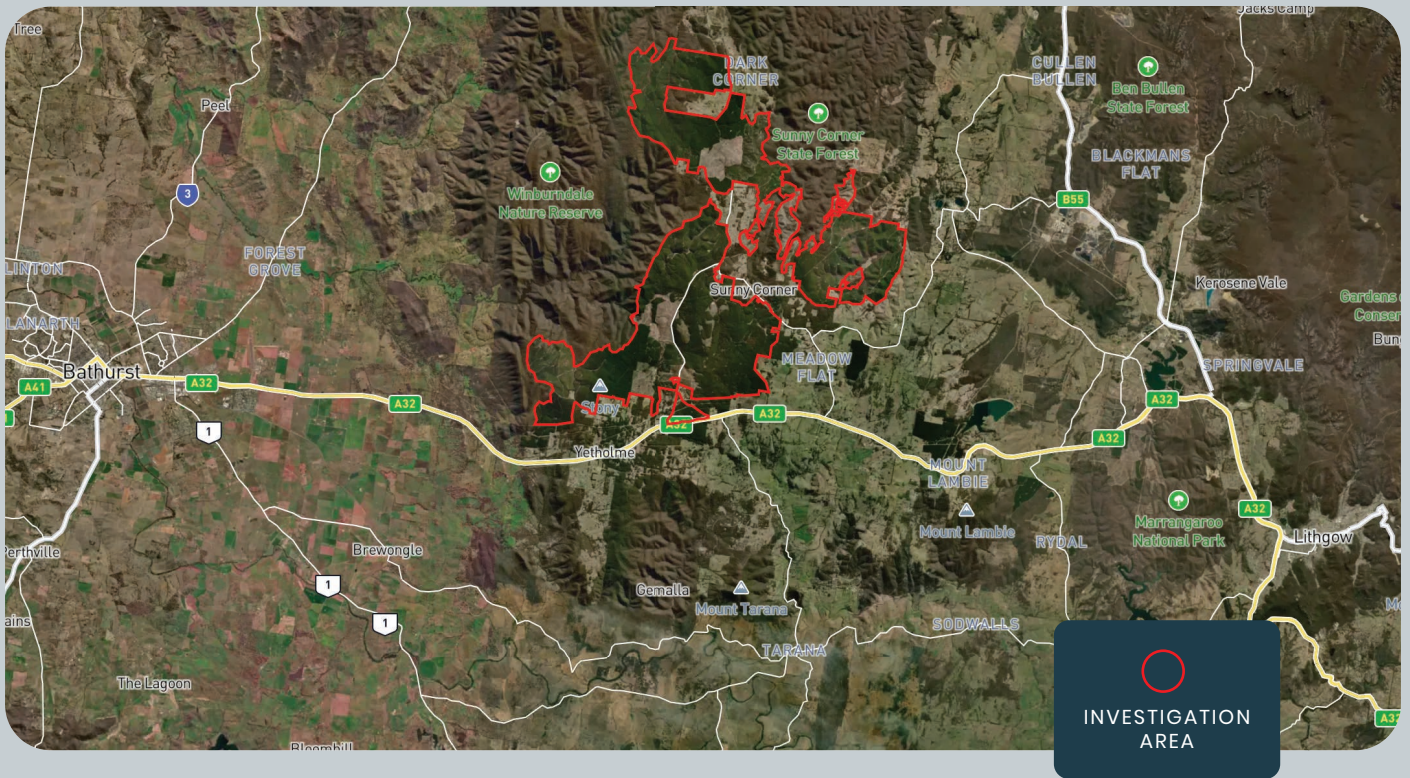


OPERATING IN
HARMONY WITH
TRADITIONAL
FORESTRY
OPERATIONS



ENGAGEMENT WITH FOREST
USERS AND RECREATIONAL
AND TOURISM OPERATIONS IN
THE STATE FOREST SUCH AS
HIKING AND MOUNTAIN BIKING

MAP OF SUNNY CORNER WIND FARM INVESTIGATION AREA



ESTIMATED PROJECT TIMELINE

2024-2025



Community Feedback.
Wind monitoring and preliminary layout design.
Preliminary environmental and social surveys and assessment.

2025-2026



Incorporate community and environmental feedback into design.
Prepare and Lodge Environmental Impact Statement.

2026-2027



NSW Determination of development application.

2028



Estimated construction commences.

2030



Planned operations commence.

Get in touch with us if you'd like to learn more about the opportunity.

Come and visit us in Portland.
Details on our website.



WWW.MAINSTREAMRP.COM



COMMUNITY@SOMEVA.COM.AU

SOMEVARENEWABLES.COM.AU/SUNNYCORNER